





## RADIO PROGRAMS

WEAN commences its week of broadcasting at 10:45 a. m. with the service of the Mathewson Street Methodist Episcopal Church. The Columbia chain program will be heard at 3 p. m. and also at 9 p. m. "What is a Good Motion Picture to See and Why" is the subject of a talk to be broadcast by Mrs. George C. Harrison tomorrow at 7:45 p. m. Beginning at 9 p. m. the famous composer hour of the Columbia system will be heard. Broadcasting of the testimonial dinner to Tim O'Neil, beginning at 7:30 p. m. is the outstanding feature of Tuesday's program. On Wednesday at 7:30 p. m. the Animal Lovers' Club of Boston will go on the air and at 9 p. m. the Columbia chain program. An organ recital from the Mathewson Street Methodist Episcopal Church will go on the air Thursday.

day at 4 p. m. Uncle Red at 7:05 p. m. and the Columbia system at 9 p. m. are features of Friday's program. The Harvard-Dartmouth football game will be broadcast from Harvard Stadium Saturday at 2:15 p. m. WJAR broadcasts the Crosby hour at 5:30 p. m. and the Capitol Theatre program at 7:20 p. m. Monday at 7:20 p. m. the station's feature will be the famous composer hour of the Columbia system. At 9:20 p. m. Beethoven's opera "Fidelio" will be heard. The continuation of the Atwater Kent audition begins Tuesday at 7:50 p. m. "Chimes of Normandy," another opera, will be heard Wednesday, beginning at 7:30 p. m. At 8:30 p. m. there will be a musical program by the Jewish Community Centre. The usual program will be heard Thursday. Friday's features in-

clude a talk by George W. Amison in behalf of the Providence Food Show at 8:20 p. m.; Irving Crocker, in a program of popular selections, at 9:15 p. m.; and "Electric Night" program, with prominent speakers at 10 p. m. The usual program will be broadcast Saturday.

WJOOT goes on the air at 2:30 p. m. with a program of harmony and piano specialties. Tomorrow at 7:30 and 8:10 p. m. programs by the North Providence Owls will be broadcast. The Hawaiian Tropical Trio goes on the air at 8 p. m. Tuesday and Jimmy Holmes and his orchestra at 8:30. On Thursday, Friday and Saturday, the usual programs will be followed.

WLSI opens its program at 10:30 a. m. with the service of the First Church of Christ Scientists and also an International Sunday School Bible lecture. At 8 p. m. the station broadcasts the service of the Church of the Seventh Day Adventist. The usual program will be heard Monday. Mike Eva Bacon, soprano, will sing at 7:45 p. m. Tuesday. The Rhode Island Weiders are scheduled to take the air at 8 p. m. Wednesday. Jacob Leichter, bass, and Golda Orlianski, soprano, will broadcast at 7:45 and 8 p. m. respectively Thursday. Choral singers of the International Bible Students Association are to be heard at 7 p. m. Friday. The feature of Saturday's broadcasts is the description of the Brown-Lebanon Valley football game, which commences at 2:30 p. m.

WEAN—THE SHEPARD STORES—419 Today

10:45 a. m.—Service from Mathewson Street M. E. Church.  
3:00 p. m.—Columbia Chain program.  
4:00 p. m.—Columbia Chain program.  
5:30 p. m.—Organ recital.  
7:00 p. m.—Asia Serenaders.  
8:00 p. m.—Columbia Chain program.  
10:00 p. m.—Columbia Chain program.

Monday  
11:55 a. m.—Time signals.  
12:00 p. m.—Weather report.  
12:30 p. m.—Continuation of musical program.  
4:00 p. m.—Musical program.  
4:30 p. m.—Weather report.  
4:40 p. m.—Organ recital.  
4:50 p. m.—Continuation of musical program.  
5:00 p. m.—Musical program.  
5:30 p. m.—Weather report.  
6:30 p. m.—Boston dinner dance.  
6:55 p. m.—Feature.

7:00 p. m.—Music.  
7:30 p. m.—Army recruiting realities revealed.  
7:45 p. m.—"What is a Good Motion Picture to See and Why," by Mrs. George C. Harrison.  
8:00 p. m.—Veneal Ramblers.  
8:30 p. m.—"Here's a New Book," by Linus Travers.  
9:00 p. m.—Columbia Chain program.  
10:00 p. m.—Columbia Chain program.

Tuesday  
11:55 a. m.—Time signals.  
12:00 p. m.—Weather report.  
12:30 p. m.—Continuation of musical program.  
4:00 p. m.—Musical program.  
4:30 p. m.—Weather report.  
4:40 p. m.—Organ recital.  
4:50 p. m.—Continuation of musical program.  
5:00 p. m.—Musical program.  
5:30 p. m.—Weather report.  
6:30 p. m.—Boston dinner dance.  
6:55 p. m.—Feature.

Wednesday  
11:55 a. m.—Time signals.  
12:00 p. m.—Weather report.  
12:30 p. m.—Continuation of musical program.  
4:00 p. m.—Musical program.  
4:30 p. m.—Weather report.  
4:40 p. m.—Organ recital.  
4:50 p. m.—Continuation of musical program.  
5:00 p. m.—Musical program.  
5:30 p. m.—Weather report.  
6:30 p. m.—Boston dinner dance.  
6:55 p. m.—Feature.

Thursday  
11:55 a. m.—Time signals.  
12:00 p. m.—Weather report.  
12:30 p. m.—Continuation of musical program.  
4:00 p. m.—Musical program.  
4:30 p. m.—Weather report.  
4:40 p. m.—Organ recital.  
4:50 p. m.—Continuation of musical program.  
5:00 p. m.—Musical program.  
5:30 p. m.—Weather report.  
6:30 p. m.—Boston dinner dance.  
6:55 p. m.—Feature.

Friday  
11:55 a. m.—Time signals.  
12:00 p. m.—Weather report.  
12:30 p. m.—Continuation of musical program.  
4:00 p. m.—Musical program.  
4:30 p. m.—Weather report.  
4:40 p. m.—Organ recital.  
4:50 p. m.—Continuation of musical program.  
5:00 p. m.—Musical program.  
5:30 p. m.—Weather report.  
6:30 p. m.—Boston dinner dance.  
6:55 p. m.—Feature.

Saturday  
11:55 a. m.—Time signals.  
12:00 p. m.—Weather report.  
12:30 p. m.—Continuation of musical program.  
4:00 p. m.—Musical program.  
4:30 p. m.—Weather report.  
4:40 p. m.—Organ recital.  
4:50 p. m.—Continuation of musical program.  
5:00 p. m.—Musical program.  
5:30 p. m.—Weather report.  
6:30 p. m.—Boston dinner dance.  
6:55 p. m.—Feature.

8:00 p. m.—Columbia chain program.  
10:00 p. m.—Columbia chain program.  
11:55 a. m.—Time signals.  
12:00 p. m.—Weather report.  
12:30 p. m.—Continuation of musical program.  
2:15 p. m.—Broadcast from Harvard Stadium.  
2:30 p. m.—Harvard vs. Dartmouth football game, reported by Paul Walti.  
3:00 p. m.—Boston dinner dance.  
3:30 p. m.—WJAC program, to be announced.

WJAR—THE OUTLET COMPANY—481 Today  
5:30 p. m.—Crosby radio hour.  
7:17 p. m.—Weather report.  
7:20 p. m.—Capitol Theatre program.  
9:15 p. m.—Correct time.  
Monday  
1:05 p. m.—Studio program.  
1:30 p. m.—Weather report.  
1:35 p. m.—Continuation of studio program.  
7:15 p. m.—Weather report.  
7:20 p. m.—State audition for the Atwater-Kent Foundation.  
8:30 p. m.—Correct time.  
8:35 p. m.—"Grand Opera Hour," by the National Grand Opera Company, under the direction of Cesare Soderi, presenting Beethoven's opera, "Fidelio."

Tuesday  
1:05 p. m.—Studio program.  
1:30 p. m.—Weather report.  
1:35 p. m.—Continuation of studio program.  
7:15 p. m.—Weather report.  
7:20 p. m.—State audition for the Atwater-Kent Foundation.  
8:30 p. m.—Correct time.  
8:35 p. m.—"Grand Opera Hour," by the National Grand Opera Company, under the direction of Cesare Soderi, presenting Beethoven's opera, "Fidelio."

Wednesday  
1:05 p. m.—Studio program.  
1:30 p. m.—Weather report.  
1:35 p. m.—Continuation of studio program.  
7:15 p. m.—Weather report.  
7:20 p. m.—State audition for the Atwater-Kent Foundation.  
8:30 p. m.—Correct time.  
8:35 p. m.—"Grand Opera Hour," by the National Grand Opera Company, under the direction of Cesare Soderi, presenting Beethoven's opera, "Fidelio."

Thursday  
1:05 p. m.—Studio program.  
1:30 p. m.—Weather report.  
1:35 p. m.—Continuation of studio program.  
7:15 p. m.—Weather report.  
7:20 p. m.—State audition for the Atwater-Kent Foundation.  
8:30 p. m.—Correct time.  
8:35 p. m.—"Grand Opera Hour," by the National Grand Opera Company, under the direction of Cesare Soderi, presenting Beethoven's opera, "Fidelio."

Friday  
1:05 p. m.—Studio program.  
1:30 p. m.—Weather report.  
1:35 p. m.—Continuation of studio program.  
7:15 p. m.—Weather report.  
7:20 p. m.—State audition for the Atwater-Kent Foundation.  
8:30 p. m.—Correct time.  
8:35 p. m.—"Grand Opera Hour," by the National Grand Opera Company, under the direction of Cesare Soderi, presenting Beethoven's opera, "Fidelio."

8:30 p. m.—Musical program by the Jewish Community Centre.  
9:00 p. m.—Continuation of Jewish Community Centre program.  
9:30 p. m.—Goodrich orchestra and quartet.  
Thursday  
10:00 a. m.—Housewives' radio exchange, a department conducted by Mrs. Wood on matters of household interest. Questions submitted will be answered by radio.  
11:00 a. m.—Radio household institute.  
1:05 p. m.—Studio program.  
1:30 p. m.—Weather report.  
1:35 p. m.—Continuation of studio program.  
7:15 p. m.—Weather report.  
7:20 p. m.—State audition for the Atwater-Kent Foundation.  
8:30 p. m.—Correct time.  
8:35 p. m.—"Grand Opera Hour," by the National Grand Opera Company, under the direction of Cesare Soderi, presenting Beethoven's opera, "Fidelio."

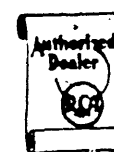
Friday  
10:00 a. m.—Housewives' radio exchange, a department conducted by Mrs. Wood on matters of household interest. Questions submitted will be answered by radio.  
11:00 a. m.—Radio household institute.  
1:05 p. m.—Studio program.  
1:30 p. m.—Weather report.  
1:35 p. m.—Continuation of studio program.  
7:15 p. m.—Weather report.  
7:20 p. m.—State audition for the Atwater-Kent Foundation.  
8:30 p. m.—Correct time.  
8:35 p. m.—"Grand Opera Hour," by the National Grand Opera Company, under the direction of Cesare Soderi, presenting Beethoven's opera, "Fidelio."

Saturday  
1:05 p. m.—Studio program.  
1:30 p. m.—Weather report.  
1:35 p. m.—Continuation of studio program.  
7:15 p. m.—Weather report.  
7:20 p. m.—State audition for the Atwater-Kent Foundation.  
8:30 p. m.—Correct time.  
8:35 p. m.—"Grand Opera Hour," by the National Grand Opera Company, under the direction of Cesare Soderi, presenting Beethoven's opera, "Fidelio."

Sunday  
1:05 p. m.—Studio program.  
1:30 p. m.—Weather report.  
1:35 p. m.—Continuation of studio program.  
7:15 p. m.—Weather report.  
7:20 p. m.—State audition for the Atwater-Kent Foundation.  
8:30 p. m.—Correct time.  
8:35 p. m.—"Grand Opera Hour," by the National Grand Opera Company, under the direction of Cesare Soderi, presenting Beethoven's opera, "Fidelio."

Continued on Page Ten.

AUTHORIZED DEALER FOR R. C. A.



Radiola

CONVENIENT TERMS ARRANGED

EMPIRE RADIO CO.

RHODE ISLAND'S LARGEST EXCLUSIVE RADIO STORE

23-25 EMPIRE STREET



BUY YOUR

RCA-Radiola

AT

M. STEINERT &amp; SONS

CONVENIENT PAYMENTS

ALSO AGENTS FOR

Kolster, Atwater Kent, Stromberg Carlson  
Steinert Building 495 Westminster St.

FULL LINE OF

RCA Radiola  
Meiklejohn

297 Weybosset St.

Radiola

Sets and Parts

C. J. THOMPSON

1343 BROAD STREET

Battery Service—Supplies  
Tel. Broad 5603

We Sell and Service

Radiola

R. W. FARNUM, Inc.

The Radiola Shop

12 Meeting St., Pawt.

Phone 4565

Radiola

SALES AND SERVICE

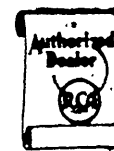
WALTER W. MASSIE

16 WINDSOR ROAD

Edgewood, R. I.

Broad 0507

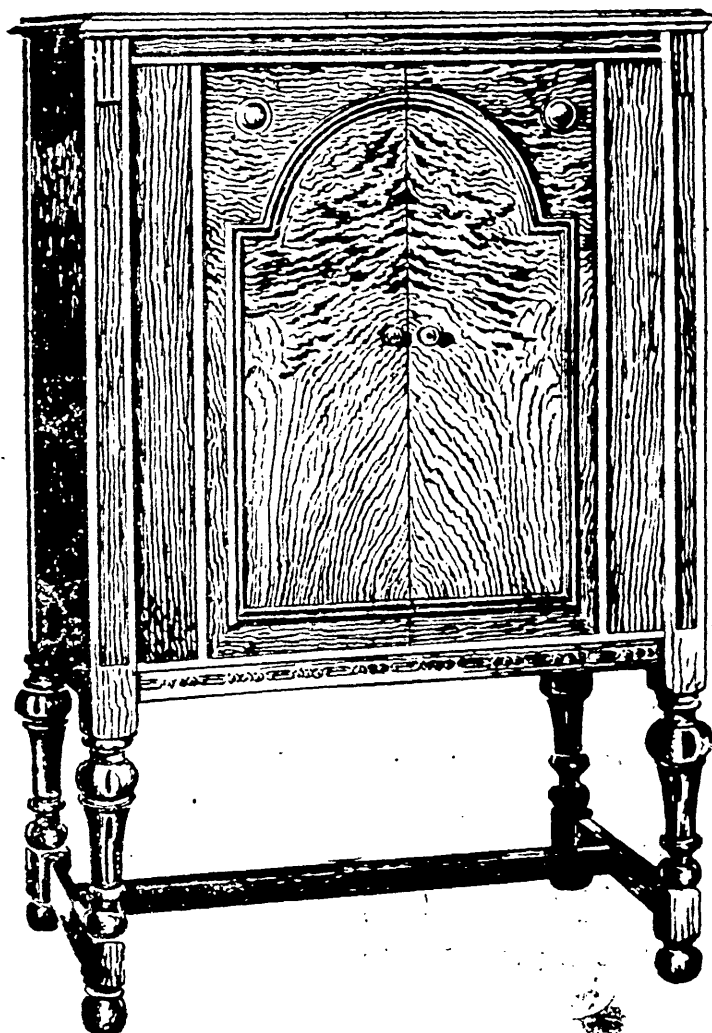
AUTHORIZED DEALER FOR R. C. A.



Radiola

Summerfield's

274-280 Weybosset St. Providence, R.I.

Southern New England  
Distributors to the Trade  
forRadiola  
SETS & SPEAKERSRadiotron  
TUBESEVEREADY  
BATTERIESTungar  
CHARGERSMajestic  
ELIMINATORSUNION ELECTRIC SUPPLY CO.  
RADIO AND ELECTRICAL EQUIPMENTPROVIDENCE, R. I. Wholesale NEW BEDFORD, MASS.  
60 Pine St., Cor. of Orange 20 Commercial St.—  
Phone Ga.-6323-6328—Only Phone New Bedford-230-240The incomparable  
Super-Heterodyne  
in a custom-built modelRADIOLA 30-A  
Custom-built,  
Complete with Radiotrons  
\$495

## —simplified socket-power operation

Radio engineers all recognize the super-heterodyne as the finest achievement in radio receiver design. Its unrivalled selectivity, sensitivity and fidelity of tone have made the super-heterodyne the standard of comparison in the radio art.

In response to the demand for deluxe models of the RCA Super-Heterodyne—with the convenience and efficiency of operation from the electric light socket (without batteries or liquid-containing devices)—RCA offers the new custom-built Radiola 30-A. This cabinet receiver, because of its extreme selectivity, is ideally

adapted for use in the congested broadcasting areas.

Each instrument (with the self-contained RCA Loudspeaker) has been hand-built and individually tested.

The new complete line of Radiolas includes receivers for dry battery, storage battery and socket-power operation, ranging from \$69.50 to \$895.

You haven't really heard radio until you have listened to a Radiola with an RCA Loudspeaker.

Any RCA Authorized Dealer will gladly demonstrate these wonderful instruments for you.

RADIO CORPORATION OF AMERICA  
NEW YORK CHICAGO SAN FRANCISCO

RCA-Radiola

MADE BY THE MAKERS OF THE RADIOTRON

BUY WITH CONFIDENCE

WHERE YOU SEE THIS SIGN



Radiola

SALES AND SERVICE

John M. Dean Co.

171-173 WASHINGTON ST.

West Warwick

Valley 563

D. SIPERSTEIN

279 TAUNTON AVENUE

EAST PROVIDENCE, R. I.

AUTHORIZED DEALER

RADIOLA; BREMER TULLY, CROSLY  
FREED-EISEMANN and POLLE ROYAL

ALSO

PHILCO AND MAJESTIC POWER UNITS

ALL RADIOS SOLD ON EASY TERMS

R. C. A. RADIOLA

DISTRIBUTORS

WHOLESALE ONLY

Wetmore-Savage Elec. Supply Co.

53 PINE STREET, PROVIDENCE, R. I.

Phones GASPEE 6484-6485-6486

Authorized RCA-Radiola Dealer

Putz



Radio

85 EAST AVENUE,  
PAWTUCKET, R. I.

AUTHORIZED

RCA-Radiola DEALER

SETS

PARTS



B. &amp; H. Supply Co., Inc.

116 MATHEWSON STREET



## President May Seek Hoover's Advice in Radio Appointment

Successor to Col. John Dillon Probably Will Be Selected Soon.—Commission Eulogizes Pacific Coast Member Who Dies After Long Illness

The belief is expressed in Washington that President Coolidge will be guided largely by the advice of Secretary Hoover in the appointment of a successor to the late Col. John F. Dillon, as Federal Radio Commissioner from the Pacific Coast zone. Also the fact that Colonel Dillon had been incapacitated almost from the time he was appointed last March and the West had thus been having only such attention as other badly overburdened commissioners could give it, there is an impression that Mr. Coolidge is likely to make a recess appointment and at an early date.

Col. Dillon's successor will, according to the law, have to be an actual resident of the zone he represents, which roughly confines the West Coast and Rocky Mountain states, must be a Republican and his term will expire March 1, 1929.

The fact that Secretary Hoover himself has been in California that he has for years been an advisor to the President in radio matters and that he was generally credited with having recommended the appointment of Col. Dillon to Mr. Coolidge are the reasons generally advanced that the Secretary of Commerce will be sought as an advisor in the pending appointment.

Although deemed from the start there is no question but that Col. Dillon sacrificed years of his life in the physical exertion he made during the first feverish months of the Commission's existence, the fact that he was one of the pioneer radio supervisors of the country and probably knew more about radio administration than any man of the commission, is

very heavy burden fell upon his shoulders. His advice and assistance in building the foundation of the present radio policy was invaluable.

For a considerable time after he was really no longer able to carry on his work, he continued to visit his desk, sometimes being able to remain only for an hour or so. Finally, as his condition grew worse, he was taken to his old home in San Francisco, where he died last Sunday.

Until the very end, Col. Dillon expected that he would recover and always there was the desire to get back to the task for which he was so admirably fitted.

Following the formal notification to the President of Col. Dillon's death by Admiral Bullard, chairman, the Federal Radio Commission passed the following resolution:

"Whereas, the Federal Radio Commission has, in the death of Lieut. Col. John Francis Dillon, lost one of its able original members, a gallant soldier, a skilled engineer, long and intimately concerned with the problems of radio communication, a public servant devoted to the interests of the people of the United States, a tireless worker and a courteous, kindly and generous comrade, be it therefore,

"Resolved: That the Federal Radio Commission place on its permanent records these words:

"In memory of Lieut. Col. John Francis Dillon, to whom the art of radio communication in America owes an enduring debt for his wise counsel, his clear vision and his devoted labor as the first member of the Federal Radio Commission from the Fifth Zone."

8:15 p. m.—Studio evensong.  
9:15 p. m.—Vibrant melodies with soprano soloist.  
10:00 p. m.—Correct time.

WHAR-ATLANTIC CITY—273  
10:45 a. m.—Service of Chelsea Baptist Church.  
2:15 p. m.—Recital.  
2:45 p. m.—Service of First Baptist Church.  
7:30 p. m.—"The Bible Story Man."  
7:45 p. m.—Service of Chelsea Baptist Church.

WHN-NEW YORK—396  
12:30 p. m.—Organ recital.  
1:00 p. m.—"Three Little Saxes."  
2:00 p. m.—Symphony orchestra.  
5:00 p. m.—Dance orchestra.  
5:30 p. m.—Concert trio.  
11:00 p. m.—Organ recital.  
12:00 p. m.—Orchestra.

WIP-PHILADELPHIA—308  
10:45 a. m.—Service from Holy Trinity Church.  
10:05 p. m.—Sacred concert.

WJZ-NEW YORK—454  
9:00 a. m.—Children's hour.  
2:00 p. m.—Rocky and his gang.  
4:00 p. m.—St. George's vespers service.  
7:00 p. m.—Radio vespers.  
7:30 p. m.—The Grapes.  
8:00 p. m.—Organ recital.  
9:15 p. m.—Vibrant melodies with soprano soloist.  
9:30 p. m.—Morley singers.  
10:00 p. m.—Correct time.  
10:30 p. m.—Godfrey Ludlow, violinist, and Lolita Gainsburg, pianist.  
10:15 p. m.—Don Amazio, the Wizard.

WKBW-BUFFALO—217  
9:30 a. m.—Episcopal Church service.  
10:30 a. m.—Service from Church of Tabernacle.  
3:00 p. m.—Bible meditation.  
7:00 p. m.—Evangelistic service.  
10:15 p. m.—Back Home Gospel Melody four.

WOR-NEWARK—123  
7:45 p. m.—Episcopal evening musicale.  
8:45 p. m.—Elizabeth Speelman, piano recital.  
9:00 p. m.—Columbia hour.

WFG-ATLANTIC CITY—273  
4:15 p. m.—Community vocal and instrumental recital.  
5:15 p. m.—Twilight concert hour.  
8:00 p. m.—News flash.  
9:10 p. m.—Concert orchestra.  
10:00 p. m.—Sunday evening musicale.

WENY-NEW YORK—309  
11:00 a. m.—Service from St. Matthew's Lutheran Church.  
3:30 p. m.—Wagnerian lecture by Mrs. R. Seligman.

8:15 p. m.—Atwater Kent hour.  
10:15 p. m.—Address, "What the English Think of Americans," by Hon. Rhy J. Davies, M. P., labor leader, House Commons.  
10:30 p. m.—Cathedral echoes.

WEEI-BOSTON—114  
11:00 a. m.—Service from Old South Church.  
2:00 p. m.—Hour of hospitality.  
4:00 p. m.—Dr. S. Parkes Cadman, Bedford Branch, Y. M. C.  
5:30 p. m.—Crosley radio hour.  
6:38 p. m.—Radio chats.  
7:00 p. m.—Bulletin from the Boston Automobile Club.  
7:30 p. m.—Newspaper sidelights.  
7:50 p. m.—Musical.  
8:15 p. m.—Correct time.  
8:30 p. m.—Atwater Kent hour.  
10:15 p. m.—Cruising the air with Bill Harrison.  
10:20 p. m.—Radio review.  
10:30 p. m.—News dispatches.

WFEL-SEACON-358  
2:00 p. m.—International Bible Students.  
3:00 p. m.—Columbia network.  
4:00 p. m.—Columbia network.  
6:30 p. m.—Dinner concert.  
9:00 p. m.—Columbia network.  
10:00 p. m.—Columbia network.

WFI-PHILADELPHIA—408  
10:20 a. m.—Service from Arch Street Methodist Episcopal Church.  
4:30 p. m.—Chapel service.  
5:30 p. m.—Crosley Moscow Art Orchestra.  
6:15 p. m.—Correct time.  
9:15 p. m.—Atwater Kent hour.

WGRS-NEW YORK—310  
8:30 p. m.—Genevieve Marsh, concert pianist.  
8:40 p. m.—Max Schwartz, violinist.  
8:50 p. m.—Freda Williams, lyric soprano.  
9:00 p. m.—String ensemble.  
9:15 p. m.—Genevieve Marsh, concert pianist.  
9:30 p. m.—Freda Williams, lyric soprano.  
9:40 p. m.—String ensemble.  
10:00 p. m.—Little symphony.

WGR-BUFFALO—308  
10:45 p. m.—Evening service from Westminster Presbyterian Church, Buffalo.  
12:00 m.—Weather forecast.  
8:30 p. m.—Crosley radio hour.  
9:30 p. m.—Evening service from Central Presbyterian Church, Buffalo.  
10:15 p. m.—Atwater Kent hour.  
10:15 p. m.—"What the English Think of Americans."

WGY-SCHENECTADY—380  
10:30 a. m.—Service of First English Lutheran Church, Schenectady.  
3:30 p. m.—Symphony orchestra.  
4:00 p. m.—Organ recital.  
5:30 p. m.—Crosley radio hour.  
6:20 p. m.—Capital Theatre program.  
9:15 p. m.—Correct time.  
9:15 p. m.—Atwater Kent hour.

WHAM-ROCHESTER—274  
11:00 a. m.—Service from Brick Presbyterian Church.  
3:30 p. m.—Symphony concert.  
8:15 p. m.—Organ recital.  
5:30 p. m.—Radio vespers.  
7:00 p. m.—Dinner concert.  
7:30 p. m.—Studio intermission.  
7:45 p. m.—Dinner concert.

10:45 p. m.—Service from First English Lutheran Church, Schenectady.  
3:30 p. m.—Symphony orchestra.  
4:00 p. m.—Organ recital.  
5:30 p. m.—Crosley radio hour.  
6:20 p. m.—Capital Theatre program.  
9:15 p. m.—Correct time.  
9:15 p. m.—Atwater Kent hour.

11:00 a. m.—Service from Brick Presbyterian Church.  
3:30 p. m.—Symphony concert.  
8:15 p. m.—Organ recital.  
5:30 p. m.—Radio vespers.  
7:00 p. m.—Dinner concert.  
7:30 p. m.—Studio intermission.  
7:45 p. m.—Dinner concert.

10:45 p. m.—Service from First English Lutheran Church, Schenectady.  
3:30 p. m.—Symphony orchestra.  
4:00 p. m.—Organ recital.  
5:30 p. m.—Crosley radio hour.  
6:20 p. m.—Capital Theatre program.  
9:15 p. m.—Correct time.  
9:15 p. m.—Atwater Kent hour.

11:00 a. m.—Service from Brick Presbyterian Church.  
3:30 p. m.—Symphony concert.  
8:15 p. m.—Organ recital.  
5:30 p. m.—Radio vespers.  
7:00 p. m.—Dinner concert.  
7:30 p. m.—Studio intermission.  
7:45 p. m.—Dinner concert.

10:45 p. m.—Service from First English Lutheran Church, Schenectady.  
3:30 p. m.—Symphony orchestra.  
4:00 p. m.—Organ recital.  
5:30 p. m.—Crosley radio hour.  
6:20 p. m.—Capital Theatre program.  
9:15 p. m.—Correct time.  
9:15 p. m.—Atwater Kent hour.

11:00 a. m.—Service from Brick Presbyterian Church.  
3:30 p. m.—Symphony concert.  
8:15 p. m.—Organ recital.  
5:30 p. m.—Radio vespers.  
7:00 p. m.—Dinner concert.  
7:30 p. m.—Studio intermission.  
7:45 p. m.—Dinner concert.

10:45 p. m.—Service from First English Lutheran Church, Schenectady.  
3:30 p. m.—Symphony orchestra.  
4:00 p. m.—Organ recital.  
5:30 p. m.—Crosley radio hour.  
6:20 p. m.—Capital Theatre program.  
9:15 p. m.—Correct time.  
9:15 p. m.—Atwater Kent hour.

11:00 a. m.—Service from Brick Presbyterian Church.  
3:30 p. m.—Symphony concert.  
8:15 p. m.—Organ recital.  
5:30 p. m.—Radio vespers.  
7:00 p. m.—Dinner concert.  
7:30 p. m.—Studio intermission.  
7:45 p. m.—Dinner concert.

10:45 p. m.—Service from First English Lutheran Church, Schenectady.  
3:30 p. m.—Symphony orchestra.  
4:00 p. m.—Organ recital.  
5:30 p. m.—Crosley radio hour.  
6:20 p. m.—Capital Theatre program.  
9:15 p. m.—Correct time.  
9:15 p. m.—Atwater Kent hour.

11:00 a. m.—Service from Brick Presbyterian Church.  
3:30 p. m.—Symphony concert.  
8:15 p. m.—Organ recital.  
5:30 p. m.—Radio vespers.  
7:00 p. m.—Dinner concert.  
7:30 p. m.—Studio intermission.  
7:45 p. m.—Dinner concert.

10:45 p. m.—Service from First English Lutheran Church, Schenectady.  
3:30 p. m.—Symphony orchestra.  
4:00 p. m.—Organ recital.  
5:30 p. m.—Crosley radio hour.  
6:20 p. m.—Capital Theatre program.  
9:15 p. m.—Correct time.  
9:15 p. m.—Atwater Kent hour.

11:00 a. m.—Service from Brick Presbyterian Church.  
3:30 p. m.—Symphony concert.  
8:15 p. m.—Organ recital.  
5:30 p. m.—Radio vespers.  
7:00 p. m.—Dinner concert.  
7:30 p. m.—Studio intermission.  
7:45 p. m.—Dinner concert.

10:45 p. m.—Service from First English Lutheran Church, Schenectady.  
3:30 p. m.—Symphony orchestra.  
4:00 p. m.—Organ recital.  
5:30 p. m.—Crosley radio hour.  
6:20 p. m.—Capital Theatre program.  
9:15 p. m.—Correct time.  
9:15 p. m.—Atwater Kent hour.

11:00 a. m.—Service from Brick Presbyterian Church.  
3:30 p. m.—Symphony concert.  
8:15 p. m.—Organ recital.  
5:30 p. m.—Radio vespers.  
7:00 p. m.—Dinner concert.  
7:30 p. m.—Studio intermission.  
7:45 p. m.—Dinner concert.

10:45 p. m.—Service from First English Lutheran Church, Schenectady.  
3:30 p. m.—Symphony orchestra.  
4:00 p. m.—Organ recital.  
5:30 p. m.—Crosley radio hour.  
6:20 p. m.—Capital Theatre program.  
9:15 p. m.—Correct time.  
9:15 p. m.—Atwater Kent hour.

11:00 a. m.—Service from Brick Presbyterian Church.  
3:30 p. m.—Symphony concert.  
8:15 p. m.—Organ recital.  
5:30 p. m.—Radio vespers.  
7:00 p. m.—Dinner concert.  
7:30 p. m.—Studio intermission.  
7:45 p. m.—Dinner concert.

10:45 p. m.—Service from First English Lutheran Church, Schenectady.  
3:30 p. m.—Symphony orchestra.  
4:00 p. m.—Organ recital.  
5:30 p. m.—Crosley radio hour.  
6:20 p. m.—Capital Theatre program.  
9:15 p. m.—Correct time.  
9:15 p. m.—Atwater Kent hour.

11:00 a. m.—Service from Brick Presbyterian Church.  
3:30 p. m.—Symphony concert.  
8:15 p. m.—Organ recital.  
5:30 p. m.—Radio vespers.  
7:00 p. m.—Dinner concert.  
7:30 p. m.—Studio intermission.  
7:45 p. m.—Dinner concert.

10:45 p. m.—Service from First English Lutheran Church, Schenectady.  
3:30 p. m.—Symphony orchestra.  
4:00 p. m.—Organ recital.  
5:30 p. m.—Crosley radio hour.  
6:20 p. m.—Capital Theatre program.  
9:15 p. m.—Correct time.  
9:15 p. m.—Atwater Kent hour.

11:00 a. m.—Service from Brick Presbyterian Church.  
3:30 p. m.—Symphony concert.  
8:15 p. m.—Organ recital.  
5:30 p. m.—Radio vespers.  
7:00 p. m.—Dinner concert.  
7:30 p. m.—Studio intermission.  
7:45 p. m.—Dinner concert.

10:45 p. m.—Service from First English Lutheran Church, Schenectady.  
3:30 p. m.—Symphony orchestra.  
4:00 p. m.—Organ recital.  
5:30 p. m.—Crosley radio hour.  
6:20 p. m.—Capital Theatre program.  
9:15 p. m.—Correct time.  
9:15 p. m.—Atwater Kent hour.

11:00 a. m.—Service from Brick Presbyterian Church.  
3:30 p. m.—Symphony concert.  
8:15 p. m.—Organ recital.  
5:30 p. m.—Radio vespers.  
7:00 p. m.—Dinner concert.  
7:30 p. m.—Studio intermission.  
7:45 p. m.—Dinner concert.

## The Dial's Diary

By the Trouble-Shooter

Every radio owner has to do a certain amount of trouble-shooting even if he calls in an expert. He's got to give the expert something to work on.

You may say, "Let him listen to the set for himself and determine what's wrong." But that isn't always possible, and seldom is satisfactory. The trouble may not manifest itself the night the trouble-shooter is listening in. Also, what the owner considers trouble may not bother the expert at all.

Tastes and opinions differ. Moreover, there are some things which the inexperienced radioist may mistake for trouble.

When I go out on a call, I like to have the owner tell me what he thinks is wrong. That gives me a working basis, at least, and saves a lot of waste effort. If an owner just says, "There's something wrong," I may spend a lot

of time looking for something that doesn't exist.

Recently I was the victim of just such a situation. The owner was complaining, but had no definite idea of his complaint, and I failed to insist upon some sort of description. Well, the first thing I noticed was that the set generally didn't work very well and I started to improve it. I made some changes in the circuit, installed a new type of transformer between the audio stages and, taken all in all, bettered matters considerably.

A few days later the owner came around to tell me that still I had not corrected the trouble. When I went back to the set it was obvious that my work had produced splendid results so far as the calibre of reception goes, but the owner continued to be troubled.

Delving into it a little deeper I found that he was objecting to a crackling noise occasionally caused by an electric

elevator in the apartment. He had been quite satisfied with the generally poor reception prior to my improving the

set, but the occasional noise worried him.

(Copyright, 1927)

VICTROLAS REPAIRED  
ALL MAKES  
Get "Massey" and you will get expert work with 25 years experience, prompt attention and guaranteed satisfaction. Write to  
**JOHN H. "MASSEY"**  
55 Fuller St., Milwaukie, R. I.  
Keep this ad.

## It WAS Different--

So the Radio listeners are writing in: "OLD FOGEY" is broadcasting every Wednesday evening at 8 o'clock from Station WLSI—375 metres.

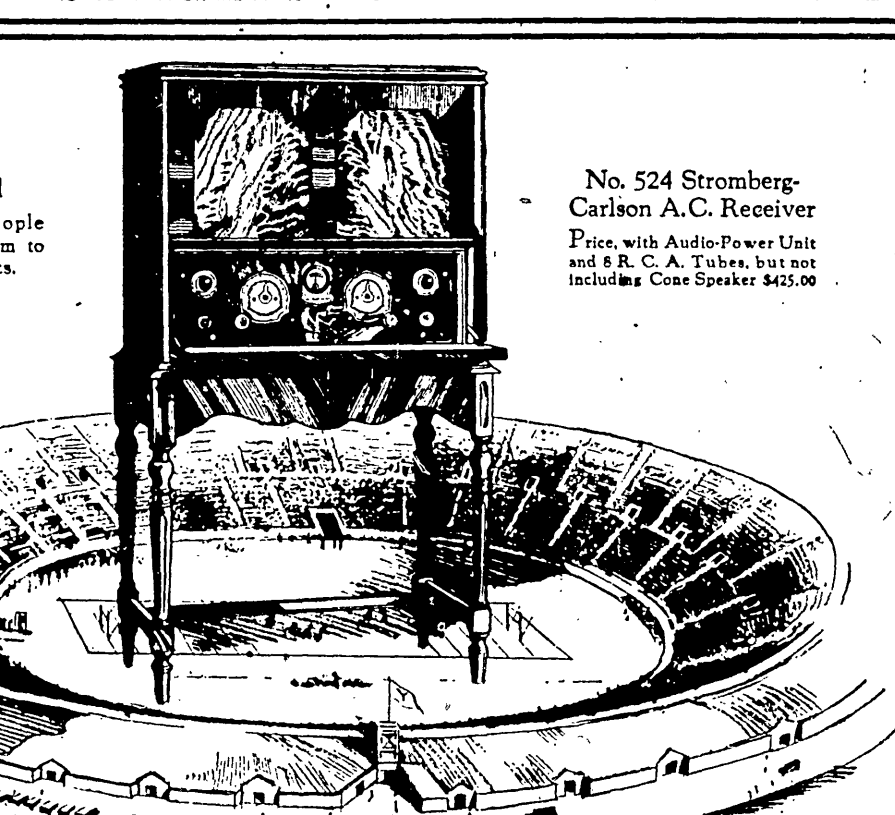
Will you be with us next Wednesday? It'll be different!

## Rhode Island Welding Co.

25 BATH STREET  
Welders, Battery Builders, Automotive Jobbers, Oil Burner Distributors

## UNITED MUSIC CO.

233 WEYBOSSET STREET  
NEW ENGLAND'S LARGEST STROMBERG-CARLSON DEALER



**Standing room only—  
or a Sideline Seat?**

A GOOD seat increases your enjoyment at a football game. A good Receiver likewise increases your enjoyment when you get the game by radio.

"Sideline Seat" Reception is what you get with a Stromberg-Carlson.

It has ample power to bring in the station you want; its close selectivity will minimize interference; its remarkable fidelity of tone will reproduce every excited inflection of the announcer's voice.

The new Stromberg-Carlson A.C. Receivers do away with batteries and liquids. All "A," "B" and "C" voltages are taken from the house lighting circuit. Simply plug into a lamp or base-board socket. Convenience—and full power in unflinching supply.

Stromberg-Carlson Telephone Mfg. Co., Rochester, N. Y.

Boston Radio Representative  
Gross-Brennan, Inc. 910 Little Bldg., Boston, Mass.  
Telephone, Hancock 7559

**Stromberg-Carlson**  
Makers of voice transmission and voice reception apparatus for more than 30 years

AUTHORIZED DEALER FOR STROMBERG-CARLSON

**M. STEINERT & SONS**

STEINERT BUILDING 495 WESTMINSTER STREET

## RADIO PROGRAMS

Continued from Page Nine

WCOI-CONN'S OLYMPIA THEATRE—225.  
Today.  
2:30 p. m.—Harmory and piano specialties, Sweet brothers.  
Monday.  
2:30 p. m.—Studio program.  
7:30 p. m.—North Providence Owls.  
7:45 p. m.—Joe Houlahan's Melody Boys.  
8:00 p. m.—Charles Houlahan, soloist.  
8:10 p. m.—Billy Herson, soloist.  
8:15 p. m.—North Providence Owls.  
8:30 p. m.—Joe Houlahan's Melody Boys.

Tuesday.  
2:30 p. m.—Studio program.  
7:30 p. m.—Melody ensemble.  
8:00 p. m.—Hawthorn Tropical Trio.  
8:30 p. m.—Jimmy Holmes and his orchestra.

Wednesday.  
2:30 p. m.—Studio program.  
7:45 p. m.—The Terrible Trio from Tarkillyn.  
8:00 p. m.—Peter Pavall, soloist, with Miss Adelaide Pavall.  
8:30 p. m.—The Terrible Trio.  
8:35 p. m.—Moonlight Entertainers String Sextet.

Thursday.  
2:30 p. m.—Studio program.  
7:45 p. m.—Hilo Hawaiians.  
8:15 p. m.—Musical program.  
2:30 p. m.—Studio program.  
7:30 p. m.—To be announced.  
8:00 p. m.—Olympia Ballroom Sterling Dance Orchestra.

Saturday.  
2:30 p. m.—Studio program.  
7:30 p. m.—Musical program.  
8:00 p. m.—Olympia Ballroom Sterling Dance Orchestra.

WLSI-LINCOLN STUDIOS, INC.—375.  
Today.  
10:30 a. m.—Service from First Church of Christ, Scientist, also International Sunday School lesson Bible lecture.  
2:00 p. m.—Miss Annie Pickles, soprano.  
2:30 p. m.—International Bible Students.  
8:00 p. m.—Service from Church of the Seventh Day Adventist.

9:00 p. m.—Billmore Market hour.  
Tuesday.  
6:30 p. m.—Guernsey Trio.  
7:30 p. m.—Colonial Line concert.  
7:45 p. m.—Miss Eva Bason, soprano.  
8:15 p. m.—To be announced.  
10:00 p. m.—Hotel Billmore Orchestra.

Wednesday.  
6:00 p. m.—Hotel Dreyfuss Orchestra.  
7:00 p. m.—International Bible Students, questions and answers.  
8:00 p. m.—R. I. Welders.  
9:00 p. m.—"Good Fellows Hour."

Thursday.  
6:30 p. m.—Nagraganett Hotel Orchestra.  
7:30 p. m.—Colonial Line Orchestra.  
7:45 p. m.—Jacob Leichter, bass soloist.  
8:00 p. m.—Golda Orlan, soprano.  
8:15 p. m.—To be announced.  
9:30 p. m.—L. G. Johnson musicale.

Friday.  
10:00 a. m.—Health talk by Mrs. A. V. Goffe.  
6:00 p. m.—Hotel Dreyfuss Orchestra.  
7:00 p. m.—International Bible Students, questions and answers.  
8:00 p. m.—R. I. Welders.  
9:00 p. m.—"Good Fellows Hour."

Saturday.  
2:30 p. m.—Brown-Lebanon Valley football game, broadcast direct from Brown stadium.  
6:30 p. m.—Port Arthur Orchestra.  
10:00 p. m.—Hotel Billmore Orchestra.

OUT OF TOWN STATIONS  
To-Day

KDKA-EAST PITTSBURGH—316  
11:00 a. m.—Service of the Point Breeze Presbyterian Church.  
4:45 p. m.—Vespers service of the Shady-side Presbyterian Church, Pittsburgh.  
6:00 p. m.—Crosley radio hour.  
7:00 p. m.—KDKA Little Symphony Orchestra.  
7:30 p. m.—Service of the Calvary Episcopal Church, Pittsburgh.  
8:15 p. m.—Collier's radio hour.

WAAW-NEWARK—319  
11:00 a. m.—Service of First Presbyterian Church.  
12:30 p. m.—Correct time.  
1:30 p. m.—Sabbath School.  
2:30 p. m.—Organ recital.  
3:30 p. m.—Abracha and Joseph Konevsky, Russian violinist and cellist.  
4:30 p. m.—Chinatown Mission.

WBAL-BALTIMORE—286  
6:30 p. m.—Concert orchestra.  
7:30 p. m.—Musical position, "The Death of Munchausen," by Longfellow.

WBSO-BARSON PARK—384  
12:00 p. m.—Midnight ministry.

WBZ-SPRINGFIELD—333  
11:00 a. m.—Services from Trinity Church, Boston.  
3:00 p. m.—News flashes.  
7:00 p. m.—Blue and Gold Hour.  
7:45 p. m.—News flashes.  
8:15 p. m.—Ensemble.  
8:30 p. m.—Collier's Radio Hour.  
9:15 p. m.—Richard Howard, pianist.  
10:00 p. m.—Metropolitan Male Quartet.  
10:10 p. m.—Correct time.  
10:30 p. m.—Musical program.  
10:45 p. m.—News flashes.  
10:55 p. m.—Weather reports, missing persons.

WEAF-NEW YORK—192  
2:00 p. m.—Interdenominational church services under direction Greater New York Federation of Churches.  
3:00 p. m.—Young people's conference under direction Greater New York Federation of Churches.  
4:00 p. m.—Men's conference from Bedford Branch Brooklyn Y. M. C. A.  
6:30 p. m.—Crosley Mexico Art Orchestra.  
7:00 p. m.—Bolshoi drama.  
7:15 p. m.—Instrumental trio.  
7:20 p. m.—Crosley Theatre program.  
9:15 p. m.—Correct time.

WEEI-BOSTON—114  
11:00 a. m.—Service from Old South Church.  
2:00 p. m.—Hour of hospitality.  
4:00 p. m.—Dr. S. Parkes Cadman, Bedford Branch, Y. M. C.  
5:30 p. m.—Crosley radio hour.  
6:38 p. m.—Radio chats.  
7:00 p. m.—Bulletin from the Boston Automobile Club.  
7:30 p. m.—Newspaper sidelights.  
7:50 p. m.—Musical.  
8:15 p. m.—Correct time.  
8:30 p. m.—Atwater Kent hour.  
10:15 p. m.—Cruising the air with Bill Harrison.  
10:20 p. m.—Radio review.  
10:30 p. m.—News dispatches.

WFEL-SEACON-358  
2:00 p. m.—International Bible Students.  
3:00 p. m.—Columbia network.  
4:00 p. m.—Columbia network.  
6:30 p. m.—Dinner concert.  
9:00 p. m.—Columbia network.  
10:00 p. m.—Columbia network.

WFI-PHILADELPHIA—408  
10:20 a. m.—Service from Arch Street Methodist Episcopal Church.  
4:30 p. m.—Chapel service.  
5:30 p. m.—Crosley Moscow Art Orchestra.  
6:15 p. m.—Correct time.  
9:15 p. m.—Atwater Kent hour.

WGRS-NEW YORK—310  
8:30 p. m.—Genevieve Marsh, concert pianist.  
8:40 p. m.—Max Schwartz, violinist.  
8:50 p. m.—Freda Williams, lyric soprano.  
9:00 p. m.—String ensemble.  
9:15 p. m.—Genevieve Marsh, concert pianist.  
9:30 p. m.—Freda Williams, lyric soprano.  
9:40 p. m.—String ensemble.  
10:00 p. m.—Little symphony.

WGR-BUFFALO—308  
10:45 p. m.—Evening service from Westminster Presbyterian Church, Buffalo.  
12:00 m.—Weather forecast.  
8:30 p. m.—Crosley radio hour.  
9:30 p. m.—Evening service from Central Presbyterian Church, Buffalo.  
10:15 p. m.—Atwater Kent hour.  
10:15 p. m.—"What the English Think of Americans."

WGY-SCHENECTADY—380  
10:30 a. m.—Service of First English Lutheran Church, Schenectady.  
3:30 p. m.—Symphony orchestra.  
4:00 p. m.—Organ recital.  
5:30 p. m.—Crosley radio hour.  
6:20 p. m.—Capital Theatre program.  
9:15 p. m.—Correct time.  
9:15 p. m.—Atwater Kent hour.

WHAM-ROCHESTER—274  
11:00 a. m.—Service from Brick Presbyterian Church.  
3:30 p. m.—Symphony concert.  
8:15 p. m.—Organ recital.  
5:30 p. m.—Radio vespers.  
7:00 p. m.—Dinner concert.  
7:30 p. m.—Studio intermission.  
7:45 p. m.—Dinner concert.

10:45 p. m.—Service from First English Lutheran Church, Schenectady.  
3:30 p. m.—Symphony orchestra.  
4:00 p. m.—Organ recital.  
5:30 p. m.—Crosley radio hour.  
6:20 p. m.—Capital Theatre program.  
9:15 p. m.—Correct time.  
9:15 p. m.—Atwater Kent hour.

11:00 a. m.—Service from Brick Presbyterian Church.  
3:30 p. m.—Symphony concert.  
8:15 p. m



## Hard-Hitting Middleweights in Main Bout Thursday

Homer Robertson and Charley Arthurs Replace Vacca-Dencio on Card.

The newly organized and licensed club which intends to conduct weekly boxing shows at the Rhode Island Auditorium on North Main street, will open its schedule Thursday night with a program calling for 44 rounds of boxing instead of 40 rounds as originally scheduled. McCormick had first intended to stage three 10-round bouts, a six and a four, but he has now shifted to four 10-rounders and a curtain-raising four-bout.

Because of an unfortunate mixup in dates Matchmaker McCormick has been forced to make a change in his proposed main bout. Instead of Johnny Vacca and Panchito, bantamweights, Thursday's headliner will bring together Homer Robertson of Boston, claimant of the world's negro middleweight championship, and Charley Arthurs of Newark, N. J., young and hard-hitting middleweight, who surprised the talent just a few months ago by holding the sensational George Courtney to a draw.

Robertson, when most of the leading welterweights and middleweights in the game today and so much so that he now is experiencing difficulty in landing blows. In one of his last starts, Robertson whipped Babe McGonery, Leo P. Flynn's highly touted middleweight from Oklahoma. He has repeatedly challenged Tiger Flowers, former middleweight champion, but the Georgia Deacon has remained aloof.

Robertson needs no introduction in New Jersey but his draw with Courtney has brought him to the front almost overnight. Arthurs is reputed to have won 40 bouts in 41 starts. His lone defeat came in the early part of his career. Arthurs is also managed by Leo P. Flynn.

The necessity for the shift in the main bout resulted in a misunderstanding between McCormick and Dencio's manager. The latter understood the date to be Oct. 30, and then went ahead and booked Panchito for a bout in New York on Oct. 21.

There will be three other 10-rounders on Thursday's inaugural show here. In the semi-final, Danny Sears, K. O. Billy

Ryan's brother, is to meet Frankie O'Brien, southpaw slugger from Hartford, Conn. They are middleweights. A third 10-rounder will bring together Eddie Adonis of Boston, who trounced Laddie Lee in his last start, and Joe Tavorieri of Boston. Adonis has performed here before and his punching prowess is well known. Tavorieri, while not so well known, is said to be a fast and shifty boxer.

Joe Accetta, State lightweight champion, will be pitted against another 135-pounder in the fourth 10-round bout. Accetta's opponent and the combatants for in the opening four-rounder, will be announced tomorrow.

## HOUSTON CAPTURES AMATEUR FEATURE

Record Crowd Sees Simon-Pure Battlers at Elks.—Main Takes 160-Pound Final.

Before a crowd which, utilizing every available inch of space, jammed Elks Auditorium to the very roof last night, the Providence A. C. staged its second amateur boxing tournament of the season, including 16 bouts in five classes. Action in all classes from the moment the first gong sounded until the last round—which, incidentally, was an extra stanza made necessary by the furious fighting of two boys—kept the customers shouting all evening.

Billy Houston of Pawtucket, 146-pound star of last week's show, scored two victories last night. In a semi-final event he received a technical knockout over Frank De Cesare of Silver Lake. De Cesare, although starting with a badly cut eye, managed to give Houston a hectic period in the first part of the two-round fight. Houston's furious jabs and hooks to the head got him in the second round, however.

Houston, driving over a powerful right to the chin just before the closing bell of the first round of his fight with Anthony Viola of Providence in the 147-pound final, scored a knockout. He forced the bout from the beginning, having Viola against the ropes many times.

In the 160-pound final, Walter Main of Westerly, who also had appeared in the semi-finals of the 160-pound class against John Conitt of Barrington, whom he knocked out with ease in the first round, despite the latter's game, received the decision over Thomas Juliano of North End, also a winner in the 160-pound semi-finals. The bout, the last of the show, went an extra stanza, as the referee and judges were unable to agree on the winner at the end of the scheduled three rounds.

Main's right hook, as well as his wicked left jab, excited his opponents considerable worry, while Juliano's hay-making right swings jarred Main greatly when they connected. At other times the draught was felt even in the 160-pound semi-finals. The bout, which he did often and with great facility.

Another fight which went an extra round for a decision was the setto between Spyro Angelo of Newport and Joseph Lazzo of Federal Hill, the latter winning the match, a semi-final in the 125-pound class. Lazzo lost the final in this class by defaulting to Joseph Jones of South Providence.

The final in the 118-pound class was a great battle with Joseph Corrello of East Providence pitting his lightning ability and great stamina against the terrific punishment of the tearing jabs of Gene Sullivan of Newport, who got the decision in the third. Sullivan's straight left, a beautiful blow to watch, jerked Corrello's head back time and again as the plucky, smaller fighter, outmatched but game, attempted to corner Corrello occasionally he did get in, and Sullivan knew it.

The final in the heavyweight class was a laugh for the fans. Johnny Lynch of Roxbury, who had demonstrated his prowess in an earlier match of the evening, faced Phil McDonald of Brookline, announced as a deaf and dumb brawler. Lynch had McDonald on the canvas for the count of 10 inside of a minute. After the count, the referee to help the referee lift the fallen man, whereupon the deaf mute yelled "Let go!" in a voice which certainly had nothing of the mute about it.

Martin Burke was in Lynch's corner. He was introduced in the ring as a prelini brawler at both the Dempsey-Sharkey and the Dempsey-Tunney classical meetings.

The summary: 118-pound class, trials—Spyro Angelo, Newport, won on foul in first round from Fred Lucas of South Bedford. 118-pound class semi-finals—Harry De Cenza, Providence, lost decision from Gene Sullivan, Newport, three rounds; Joseph Corrello, East Providence, got decision over Tony Curchia, Providence, three rounds.

Final—Gene Sullivan of Newport got decision over Joseph Corrello, East Providence, three rounds. 125-pound class, trials—Joseph Lazzo of Federal Hill knocked out John Conitt of Taunton; Kenneth Church, Edgewood, won technical knockout from Herbert Holland, Providence, in first round; Joseph Jones, South Providence, won technical knockout in second round over Cedric Zerkarian of Manton.

125-pound class, semi-finals—Spyro Angelo, Newport, lost on decision in fourth to Joseph Lazzo, Federal Hill; Joseph Jones of South Providence won by default over Kenneth Church of Edgewood, who had had cut over eye.

Finals—Joseph Lazzo, Federal Hill, won from Joseph Jones, South Providence, decision, default.

160-pound class, semi-finals—Edward Montaquello, Barrington, was defeated by Anthony Viola, Providence, technical knockout in first round; Billy Houston, Pawtucket, got technical knockout in second round over Frank De Cesare, Silver Lake.

Final—Billy Houston, Pawtucket, knocked out Anthony Viola, Providence, in first round.

160-pound class, trials—Walter Main, Westerly, knocked out Ura Evans of Manton in first round.

Semi-finals—Thomas Juliano, North End, got decision in second round over Tony Colombo, Providence; Walter Main of Westerly, knocked out John Conitt of Barrington in first round.

Final—Walter Main, defeats Thomas

## BOXING NOTES

Two weeks ago indications all pointed toward a barren local boxing season but just in that short span the prospects have changed and are now bright for a busy winter in the squared circle. Last night another fine program of amateur boxing was proffered by the Providence A. C., and this has, no doubt, become a weekly attraction. On Thursday night the What Cheer A. C., Barry McCormick's club, will open up with a 44-round card of stiffcuts, which, if supported, will also be presented once a week at the spacious North Main street auditorium.

Not that anyone cares but Franz Diener is the new German heavyweight champion. Diener gained the title the other night by outpointing Rudi Wagner in 15 rounds at Berlin. Diener appeared in a few bouts in this country but aside from displaying an abnormal capacity for absorbing punches, showed nothing.

Following his victory over the clever Eddie Lord at Holyoke, Mass., Young Tiernan, local lightweight, was offered a bout with Jackie Brady of Syracuse, but Manager Jack Dugan figured that the Syracuse section was a bit too experienced and ringwise for Tiernan just now. Brady has scored over most of the outstanding boxers in the lightweight division, and less than six months ago held Dick "Honeyboy" Finnegan to a draw.

Jack Hurley, youthful but astute manager of Billy Petrolle, the "Paro Express," has sent in to us a large and elaborate poster bearing Billy's scowling countenance and the opinions of Philadelphia scribes on the recent Tommy Herman-Petrolle bout. Brief news dispatches were to the effect that Herman dealt the cup in seven rounds, but Hurley's pretentious poster shows that a bad cut of Petrolle's eye forced the referee to halt the bout after Herman had been groggy himself in the preceding rounds.

It has been one year since Johnny Dundee fought Tod Morgan, junior lightweight champion, at San Francisco, and, notwithstanding that he refrained his run in the opening round, managed to last the 10 heats. Just two months before that bout Dundee had suffered the original fracture in a bout with Fred Greenwood, French champion, but whipped the Frenchman with one hand. Now Dundee is coming back again to meet Tony Caulzoni in New York on the 24th.

It was a rather rocky night Friday for Providence boxers, with Al Morris, heavyweight; Ernie Mandell, featherweight; and Barney Sweeney, lightweight, all running second in bouts at Boston. Eddie Hudson, speed little featherweight, will attempt to regain some of this city's boxing prestige when he meets Pete Chico, the Filipino who knocked out Barney Sweeney at Boston. Hudson, who whipped the Filipino, Angelo Pirpo of this city is also booked for a preliminary bout tomorrow at the Casino.

Belgian boxers are flocking to these shores in numbers. Hubert Gillis, featherweight, and Charles Desmet, lightweight, have already checked in while Petit Biquet, flyweight; Joe Claes, lightweight, and Georges Spille, lightweight, are sailing from Antwerp on the 21st.

Humbert Puzay's attempt to match Harry Wills with George Godfrey for the coveted title of heavyweight "black menace" has fallen flatter than a glass of near-beer. Wills, who obviously wants no part of the Liverpool shadow, who has knocked out Jim Maloney and Monte Munn in his last two starts, claims he has low blood pressure, house-maid's knee or something along those lines. Puzay may attempt one more outdoor shot, matching Sid Terris and Phil McGraw for the third time.

Promoter Homer Rainault of the Holbrook, Mass., Valley arena, is in New York seeking talent for his winter season. He attended the Delaney-Rainault bout Friday night. Rainault attempted to sign Johnny Indrisano of East Boston to meet Jimmy Finley, Louisville, Ky., a slugger. Indrisano's deal for the next two months is pretty well fixed.

The National Boxing Association, while it is to be commended in its action in defying the New York board, has placed itself in a ridiculous light by sanctioning the bout between Ruby Bradley of Holyoke and Pincus Silverberg of Ansonia, Ct., a Bridgeport, Conn., on Oct. 22, for the world flyweight title. Bradley who is, at best, nothing better than a clownish second-rater, has appeared before local fans against Frankie Genaro and looked anything but a champion that night. Silverberg rates under Bradley and one night not so long ago was knocked colder than a mackerel by Willie La Morte in a Hartford, Conn., ring.

Among other matters the National Boxing Association will discuss at Toledo this week will be the case of Sammy Mandell, present lightweight titleholder. Mandell has defended his title but once since winning it from Rocky Kansas on July 3, 1921, and it is said that the N. B. A. intends to strip the Rockford, Ill., shiek of his lightweight laurels and either name someone else or start a tournament.

Roy Mitchell and Tom Sayers, light heavyweights, clash at Boston tomorrow night.

Danny Sears, K. O. Billy's brother, meets Frankie O'Brien, Hartford, Conn., southpaw, here in a 10-round semi-final bout Thursday night and then on the following week has a bout with Tommy Hamby of Holyoke at Lynn, Mass.

Juliano, North End, four rounds, decision.

Heavyweight class, semi-finals—Johnny Lynch of Boston got technical knockout over Earl Champlin, Westerly, in first round.

Finals—Johnny Lynch of Roxbury knocked out Phil McDonald of Brookline in one round.

Officials: Time—C. W. Pratt, Providence; Judges—J. P. Ryan of East Providence and Dan Byron, Providence; Referee—Henry J. Devron, Providence.

## CUP COMPETITION DRAWINGS HELD

Teams Paired for Times, Kerr and Guy Norman Series at Soccer Meeting.

The cup committee of the Southern New England Football Association met at the Hotel Wilbur, Fall River, last night and arranged for the playing of the three cup competitions which are conducted annually by the association. Chairman Herbert F. Murray of this city presided at the meeting which was attended by all the members of the committee.

A total of 48 teams entered the Times cup competition the major tourney which determines the senior championship of the district. Eighteen Rhode Island clubs will engage in the competition which will be run off in four rounds and the customary semi-final and final games.

The drawing resulted as follows with the first named the home club: Rhode Island, Bud of Hope vs. Bernon Mills; Portuguese-Americans vs. Wolfenden; Lorraine Mills vs. German-Americans; Clan Fraser vs. American Silk; Dyer, Pearsons, Manville-Jencks, Bay Spring, Farrells Newsstand, Harrisville, Pressed Metal, Lonsdale Mills, J. D. Crosby Co., St. Rocco and Fairlawn Rovers.

In the Fall River section the Kerr Mills and Hudson-Essex teams, last year's finalists in the cup, were given a seeded bye. The pairings for the Fall River section resulted as follows: Pitons vs. Celtics; Hishaws vs. Firestone Mills; Atwaters vs. Niagaras; Turner's; Dyer, Federal Tire, Liberals and Massons.

Three games and a bye were arranged for the New Bedford entrants as follows: Prates Dairy vs. Shuberts; Black Cats vs. Madefras; Celtics vs. Watson-Defenders; by Smith P. C. In the Times series the Saturday home clubs will play on Oct. 29 and the Sunday teams will play on the 30th.

Seventeen Rhode Island teams are in the Kerr cup competition, which has 22 entries from Fall River and seven from New Bedford. Drawings were made in districts the same as in the Times games and resulted as follows: Rhode Island—German-Americans vs. Manville-Jencks; American Silk vs. St. Rocco; Clan Fraser vs. Bud of Hope; Lonsdale Mills vs. Wolfenden; Bay Spring vs. J. D. Crosby, Dyer, Pressed Metal, Lorraine Mills, Bernon Mills, Portuguese-American, Fairlawn Rovers, Farrell Newsstand and Pearsons.

New Bedford—Prates Dairy vs. Black Cats; Celtics vs. Smith P. C.; Shuberts vs. Watson-Defenders, by Maderias. Fall River—Loyal Unity vs. Pitons; Celtics vs. Kerr Mills; Abbotts vs. Eagles; Hishaws vs. Charlton Mills; Tennessee Boys vs. Federal Tire Foster-Winchester vs. St. Louis; Dyer, Raffles, Niagaras, Crescents, Picards, Liberals, Atwaters, Firestone Mills, Turner's, Hudson-Essex and Fall River United.

Nov. 5 and 6 were set as the playing days for this competition.

Only 28 of the junior teams in the association entered the Guy Norman cup series, which has an eligibility rule providing that players who com-

pete must not have been more than 20 years old on Oct. 1 of this year. The games in this competition will be played on Nov. 5 and 6. The draw is as follows:

Rhode Island—Perri Spa vs. Pawtucket Rovers; M. Pleasant vs. Braves; Antlers vs. Roy's Spa; by Greystone Blues.

Fall River—Lockes vs. Dumont Oaks; Butler Credit vs. Mercers; Warren Clothes Shop vs. Victory Boys; Nash Juniors vs. Priests; Red's Pets vs. Value Shop; Charlton Mills vs. Raffles Juniors; bys, Chryslers and Atenues. New Bedford—Tigers vs. Peckham Rovers; North End Wanderers vs. Whalers; Park.

Woodlawn Rovers vs. Olympics; bys, Shuberts. Tentative arrangements were made by the committee to play an inter-association match with the Northern Massachusetts Association at New Bedford on the first available date at Battery Park.

## ASK YOUR DEALER

# For quality of reception Balkite "B" is a virtual necessity

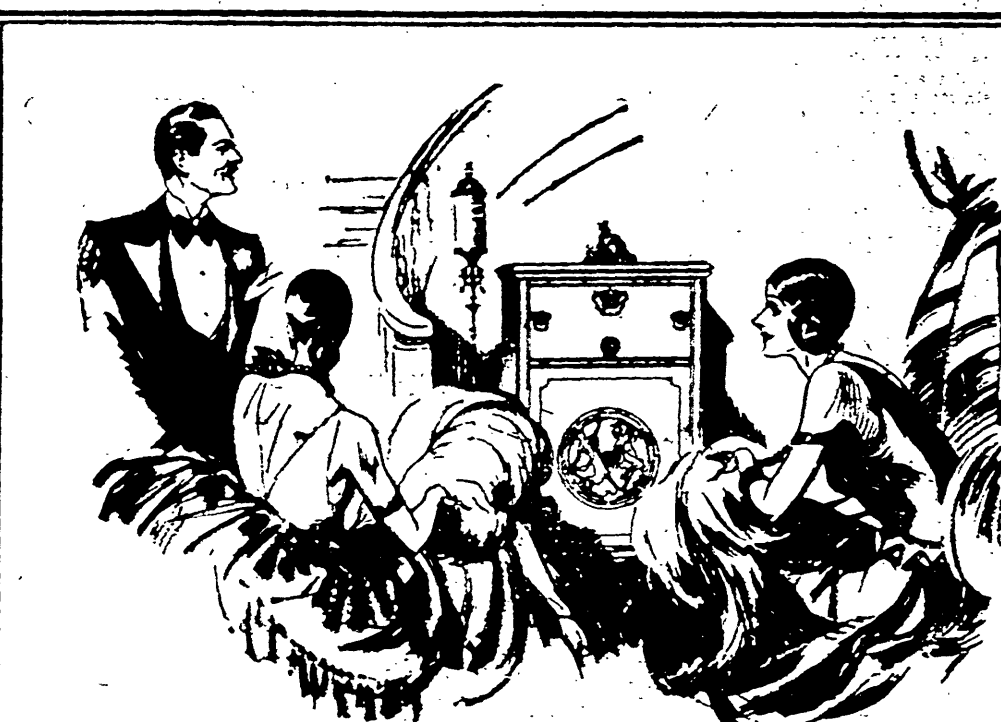
The high voltage power tubes necessary for quality reception make "B" batteries uneconomical. Light socket "B" power is a virtual necessity. Whether the "B" power supply you buy is more economical than batteries depends upon its length of life. Hence the popularity of Balkite "B."

Balkite "B" is a permanent piece of equipment. It has nothing to wear out or replace. It will outlast a dozen sets of "B" batteries. The first Balkite "B," after 5 years of service, is still as

good as new. 300,000 units in actual use have shown that Balkite "B" lasts longer than any other device in radio. The famous principle of electrolytic rectification on which Balkite "B" is based is so reliable that it is standard on the signal systems of most of the railroads of the country.

Yet Balkite "B" now costs no more than the ordinary "B" eliminator. 3 models, 90 to 180 volts. Your dealer will recommend the one you need.

FANSTEEL PRODUCTS COMPANY, INC., NORTH CHICAGO, ILLINOIS



## STEWART-WARNER Matched-Unit Radio

COLD, crisp nights—clear, star-studded skies usher in the months when radio plays a major roll in your entertainment. Autumn is here—and with it comes the big parade! The vanguard has already arrived! Football, music, news, lectures, bridge, opera—features without end are passing in review. Are you still without an adequate radio?

Do you wonder at the improvement of broadcast programs? Do you awe, gasp, at the beauty of every note, the life-like reality of every sound? You will when you listen through a new Stewart-Warner.



Model 520 (illustrated). Console of beautiful walnut and walnut veneer. Six tubes. Single dial control. Built-in Reproducer. Priced without accessories.

As it has to 17 million other users, complete satisfaction comes to the purchaser of any Stewart-Warner Product. The prestige of 25 years indicates beyond doubt that a Stewart-Warner Radio is the logical set for you.

And now is the time to buy, while the vanguard of the big radio parade is just passing. Eager for a rigid rest, new models are waiting in the showrooms of all Stewart-Warner Blue-Ribbon Dealers. Designed, built, finished, priced, to suit you, is Stewart-Warner Radio—unquestionably the brand to demand.

STEWART-WARNER RADIO DISTRIBUTOR  
110 Broadway Providence, R. I. Gaspee 0843

BUY YOUR STEWART-WARNER MATCHED-UNIT-RADIO AT THE

## Glenwood Furniture Co.

251 Weybosset Street, Providence, R. I. Phone Gaspee 8138  
CONVENIENT TERMS ARRANGED



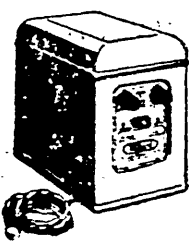
## When He Plays on His Big Bass HORN

Here's the test of tests for a Radio "B" Power Unit. Tune your set to any full-piece orchestra.

Listen for the bass horn. Then plug in a Willard Super "B" Power Unit.

## HEAR the Difference!

Note how the other instruments come out, too.



## The Willard Super "B" Power Unit

Plugs into your lamp socket. Supplies any type of set with steady "B" power for detector—amplifier—power tube. Gives 180 volts at 40 milli-amperes. The same "B" Unit that is used for the new Willard "A-B" Power Supply.

Ask your Lighting Company, your Radio Dealer or your Willard Service Station to demonstrate for you. Let your own ears hear the difference.

**Willard**  
RADIO POWER

M. STEINERT & SONS  
Steinert Bldg., 495 Westminster St.  
RECOMMEND  
WILLARD  
Super "B" Power Unit  
Convenient Terms If Desired



B. & H. Supply Co., Inc.  
116 Mathewson St.  
WILLARD  
Super "B" Power Units  
in Stock  
LARGEST STOCK  
OF  
RADIO SETS AND PARTS

A New Thrill  
in Radio  
Awaits You  
Come in and  
HEAR  
the difference when  
the Willard Super "B"  
Power Unit is used.

WILFRED ROY CO.  
(WILLARD SERVICE)  
Distributors for the  
Blackstone Valley  
712 School St., Pawtucket, R. I.  
Telephone Pawtucket 5868

## Let Music Tell You

Come in and see the  
WILLARD  
Super "B" Power Unit

Hear the  
Difference

FULLER BATTERY CO.  
INC.  
(Distributors)  
149 BROADWAY,  
Providence, R. I.  
Gaspee 1215